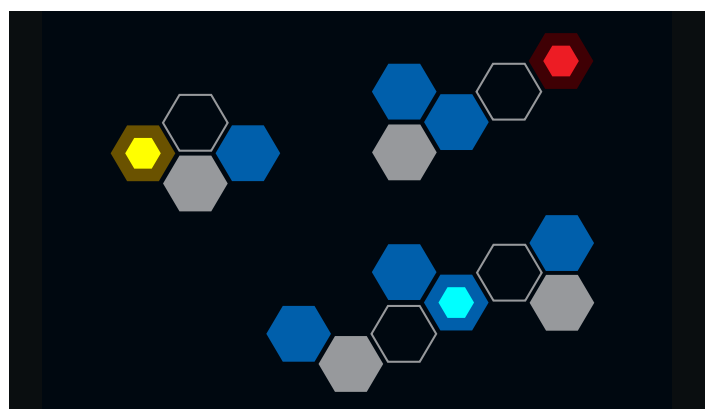
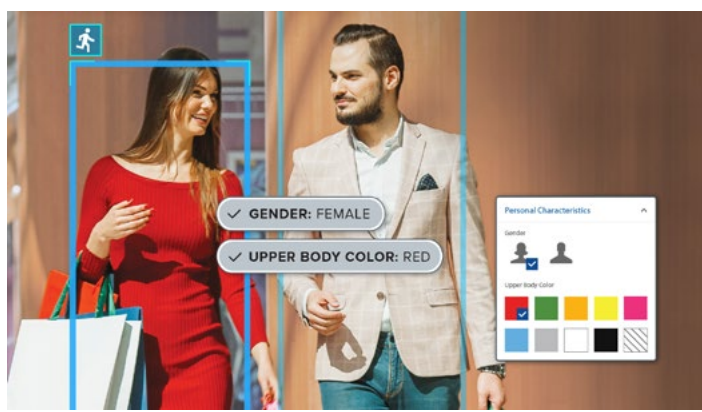




AVIGILON AVIGILON UNITY VIDEO

Security That is Powerful, Intelligent and Unified

Step into the next era of physical security with Avigilon Unity Video. Discover our most advanced on-premise, end-to-end video management software (VMS), offering higher reliability, accuracy and human-like reasoning. Unity Video merges Avigilon's time-tested, AI-powered VMS with advanced cloud-managed features, enabling effortless management of multiple sites and users, unified login for all applications and a single installer for software updates. Elevate your situational awareness with our most powerful edge analytics platform, AdaptAI, to detect potentially critical events such as unusual crowds and flag auditory disturbances.



AVIGILON APPEARANCE SEARCH™ TECHNOLOGY

Sophisticated AI-powered video search engine to search for a person or vehicle of interest by entering a physical description, uploading a photo or finding an example in recorded video.



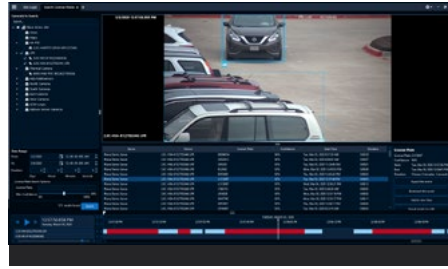
FOCUS OF ATTENTION INTERFACE

A cutting-edge user interface for live video monitoring that leverages AI and video analytics technologies to determine what information is important and should be presented to security operators.



FACIAL RECOGNITION

AI-powered facial recognition technology that helps organizations accelerate response times by identifying people of interest. Populate watch lists easily by uploading images or finding faces from recorded video.



LPR ANALYTICS

Automatically reads license plate information from vehicles, linking it to both live and recorded video. Create and import multiple vehicle license plate watch lists for instant alarm notification when a license plate match is detected.



SINGLE LOGIN CREDENTIAL

Enjoy simple and hassle-free management of all aspects of your video management system with a single, unified login.



AVIGILON DECISION MANAGEMENT SYSTEM MODULE

A 100% cloud-based decision management module within Avigilon Unity Cloud Services to streamline investigations with an intuitive interface. Easily unify video, access control and decision management into a single screen.



ADAPTAI

Avigilon's next era of edge-based, AI-powered analytics supported by Avigilon Unity Video, AdaptAI offers several robust features and enhancements such as dynamic privacy masking, crowd detection, audio analytics, and additional truck classifications with analytics event support.



FEDERAL GOVERNMENT COMPLIANCE WITH FIPS 140-2 CERTIFIED ENCRYPTION

For government agencies and enterprises that require FIPS-compliant cryptography, Unity Video offers an option to use Microsoft Windows' FIPS 140-2 certified cryptographic libraries to comply with IT policies.



CONVENIENCE WITH THE CLOUD

Our cloud-managed Unity Video software provides security teams with easy access to camera feeds and allows them to manage settings from a single interface, regardless of their location – whether from the office or on-the-go using a mobile device.



CYBERSECURITY & PRIVACY PROTECTION

Unity Video applications offer strong password enforcement, connection authentication and data encryption, as well as strict user permissions to access search functionality that uses personally-identifiable information.



UNITY PRIVILEGE MANAGEMENT

Configure roles, user groups and policies and map those to devices across the Unity Video servers on all sites using a harmonized privilege model.



ACCESS CONTROL UNIFICATION

Verify the identity of the person entering your site with seamless unification of Unity Video with your Unity Access system.

To learn more, visit [avigilon.com/unity-video](https://www.avigilon.com/unity-video)



Motorola Solutions, Inc. 500 West Monroe Street, Chicago, IL 60661 U.S.A. [motorolasolutions.com](https://www.motorolasolutions.com)

MOTOROLA, MOTO, MOTOROLA SOLUTIONS and the Stylized M Logo are trademarks or registered trademarks of Motorola Trademark Holdings, LLC and are used under license. All other trademarks are the property of their respective owners. ©2023 Motorola Solutions, Inc. All rights reserved. 09-2023 [JS04]